



Elevation A

[LibertyHomesVA.com](http://LibertyHomesVA.com)

*The Fenwick*

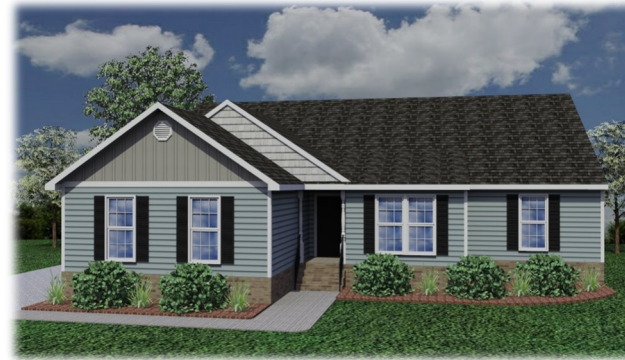
Renderings and Plans are for marketing purposes only and are shown with additional options including siding. This information is deemed accurate, but cannot be guaranteed. Builder reserves the right to make changes at any time.



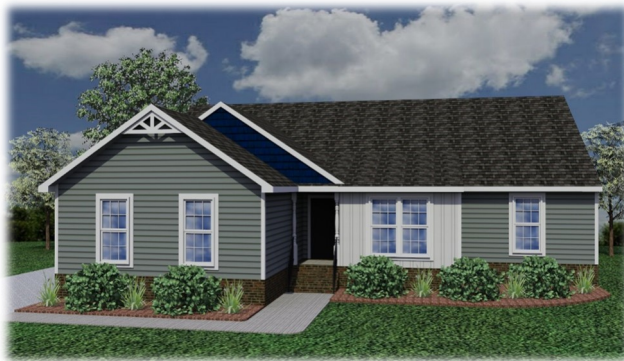
# The Fenwick Optional Elevations



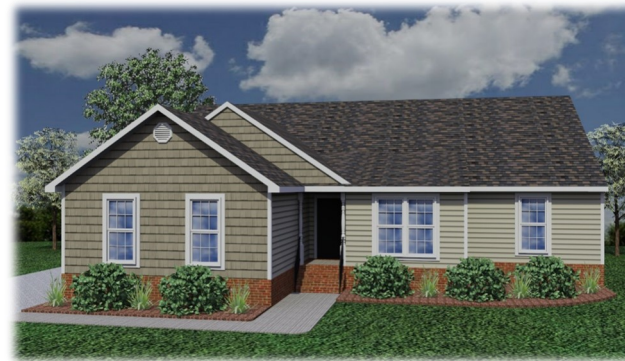
ADDITIONAL ELEVATIONS SHOWN W/ SHAKE, BOARD AND BATTEN,  
PVC WINDOW TRIM, AND/OR ARCHITECTURAL GABLE ACCENTS



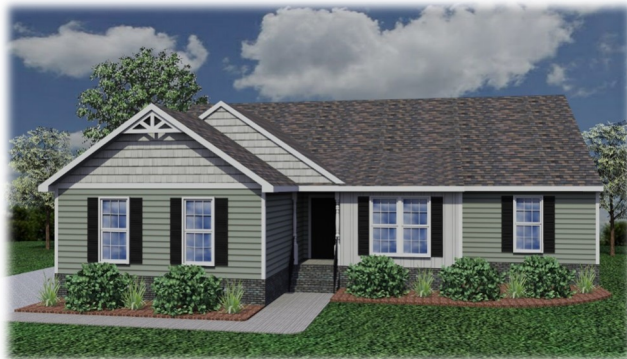
*Elevation A*



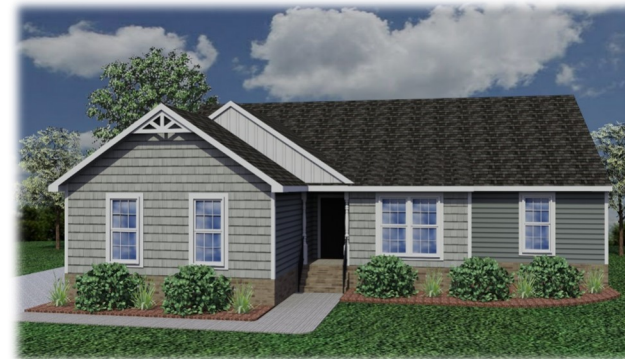
*Elevation A*



*Elevation A*



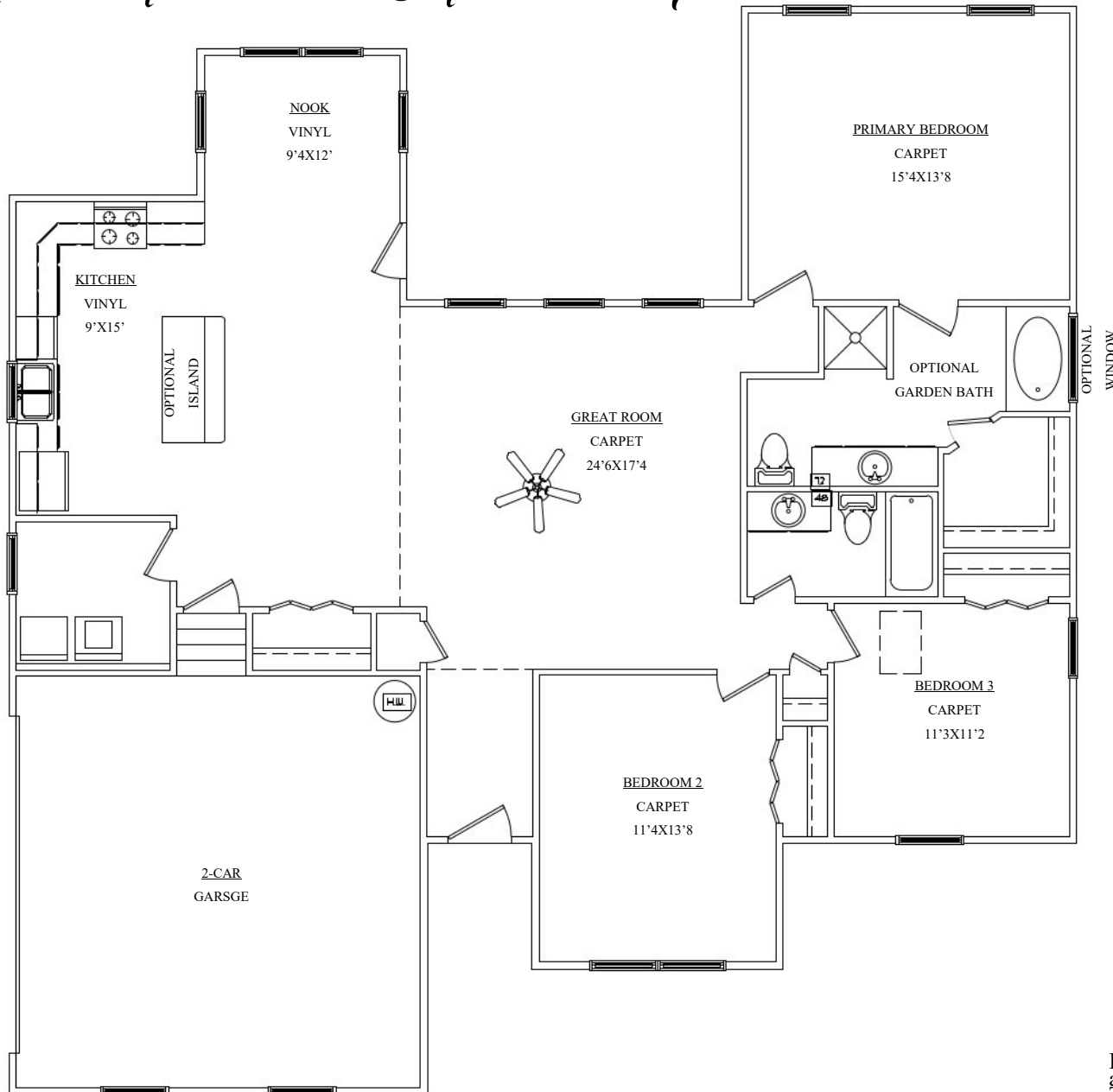
*Elevation A*



*Elevation A*

Renderings and Plans are for marketing purposes only and are shown with additional options including siding. This information is deemed accurate, but cannot be guaranteed. Builder reserves the right to make changes at any time.

# The Fenwick Floor Plan



Liberty Homes, Inc.  
8249 Crown Colony Parkway  
Mechanicsville, VA 23116

Phone: (804) 730-7770  
[LibertyHomesVA.com](http://LibertyHomesVA.com)



---

1685 Finished Square Feet  
1 Level/3BR/2BA  
Great Room  
2-Car Garage

Renderings and Plans are for marketing purposes only and are shown with additional options including siding. This information is deemed accurate, but cannot be guaranteed. Builder reserves the right to make changes at any time.