

*Elevation B*

*(Shown w/ Optional Bay Window)*

*LibertyHomesVA.com*

*The Thomas*

Renderings and Plans are for marketing purposes only and are shown with additional options including siding. This information is deemed accurate, but cannot be guaranteed. Builder reserves the right to make changes at any time.



# The Thomas Optional Elevations



*Elevation A* (Shown w/ Optional Bay Window)

ADDITIONAL ELEVATIONS SHOWN W/ SHAKE, BOARD AND BATTEN, AND/OR ARCHITECTURAL GABLE ACCENTS



*Elevation B*



*Elevation A*



*Elevation A*

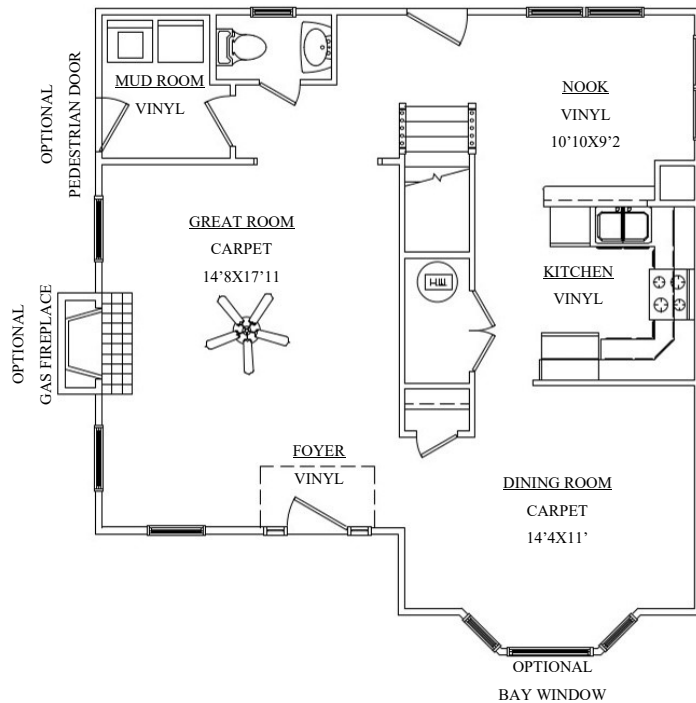


*Elevation B*

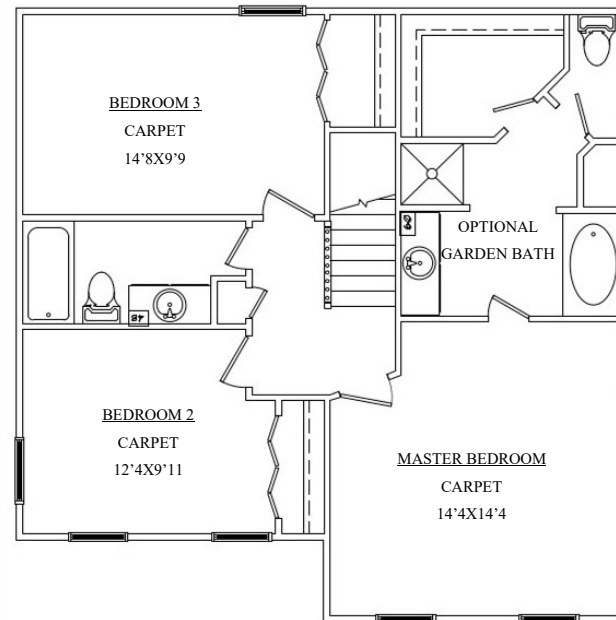
Renderings and Plans are for marketing purposes only and are shown with additional options including siding. This information is deemed accurate, but cannot be guaranteed. Builder reserves the right to make changes at any time.

# The Thomas Floor Plan

First Floor



Second Floor



Liberty Homes, Inc.  
8249 Crown Colony Parkway  
Mechanicsville, VA 23116

Phone: (804) 730-7770  
[LibertyHomesVA.com](http://LibertyHomesVA.com)



---

1680 Finished Square Feet  
3BR/2.5BA  
Optional Garden Bath  
Optional Front Bay Window

Renderings and Plans are for marketing purposes only and are shown with additional options including siding. This information is deemed accurate, but cannot be guaranteed. Builder reserves the right to make changes at any time.